

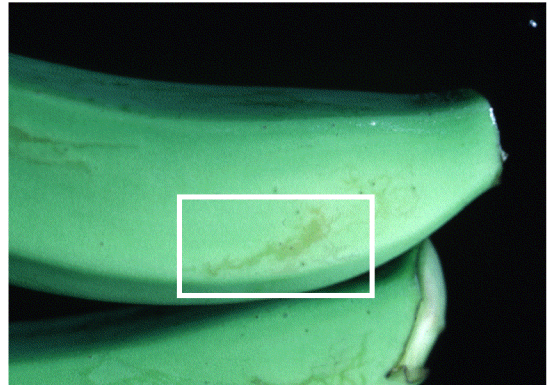
# BANANA RUST THRIPS (*Chaetanaphothrips signipennis*)

## Damage to Banana

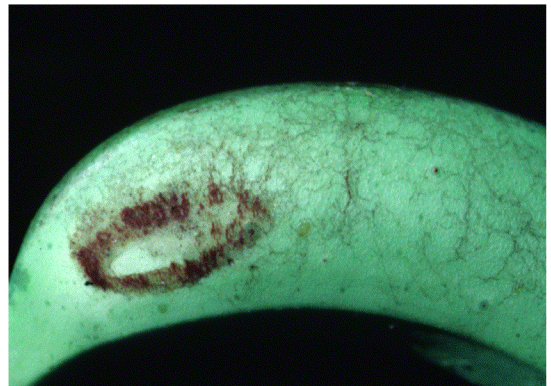
V-shaped marks to outer face of the leaf petiole.



Water-soaked lesions to young fruit



Oval, reddish “stains” where fingers touch.  
Curly-cue dark lines to the fruit surface



Dark, reddish, or smoky lesions to the fruit surface especially between the fingers.

