

# HAW-FLYPM

## Fruit Fly Species of Economic Importance in Hawaii

Hawaii's Most Wanted



Dead or Alive



Cuelure

### Melon Fly

*Bactrocera cucurbitae* (Coquillett)

**Identification:** Large black spot at wing tip and black cross streak on the wing.

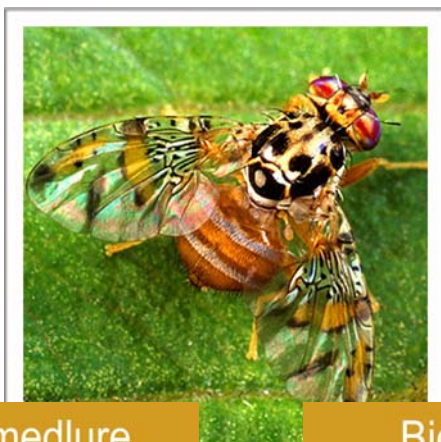


Methyl Eugenol

### Oriental Fruit Fly

*Bactrocera dorsalis* (Hendel))

**Identification:** Clear wings with black T-shaped mark on the top of the abdomen.



Trimedlure

Biolure

### Mediterranean Fruit Fly

*Ceratitis capitata* (Wiedemann)

**Identification:** Smaller 'picture wing' fly.



Latilure

### Solanaceous Fruit Fly

*Bactrocera latifrons* (Hendel)

**Identification:** Clear wings with small widened black spot at tip; abdomen usually brown with no T-shaped black mark.